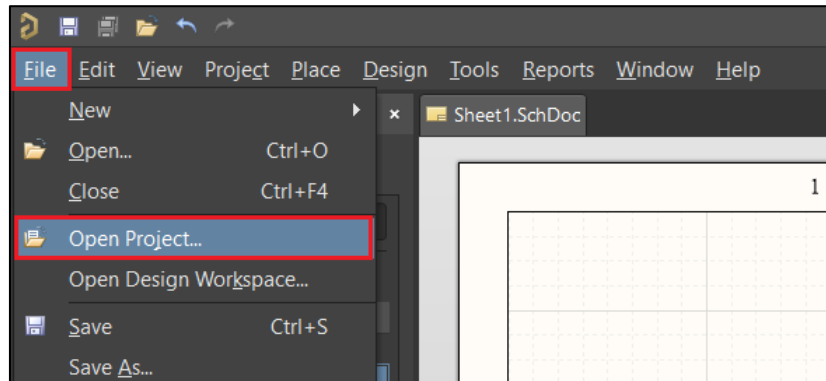
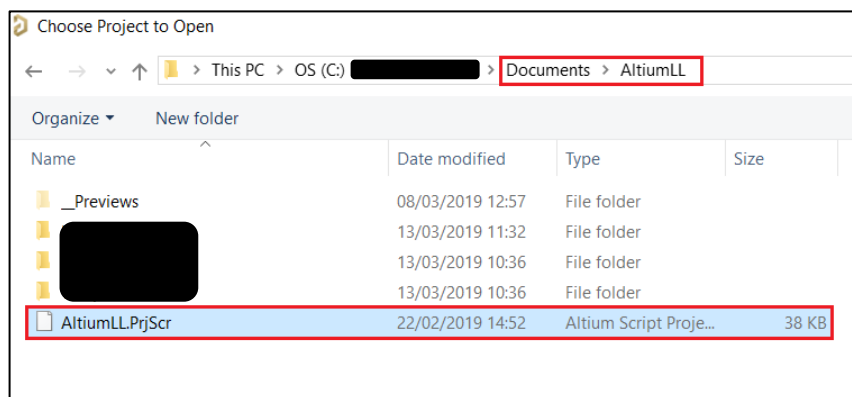


How to Install Altium Library Loader Without Local Administrator's Rights on the System

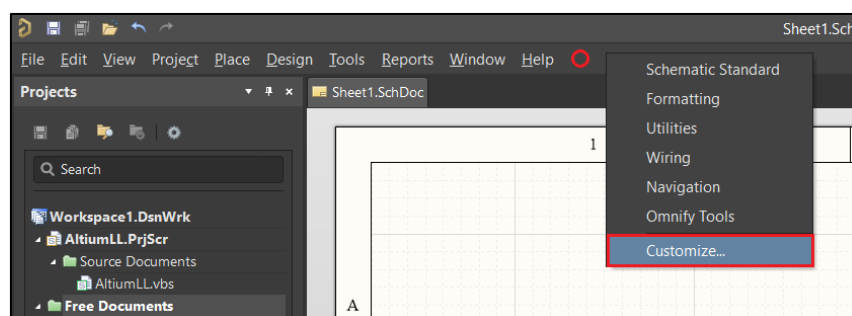
1. Download the Altium Library Loader [zip file](#) and extract the contents to your Documents folder.
2. To customise the File menu when you have a SchDoc open please follow these steps:
 - a. Select Open Project... from the File menu in Altium Designer 17 or later:



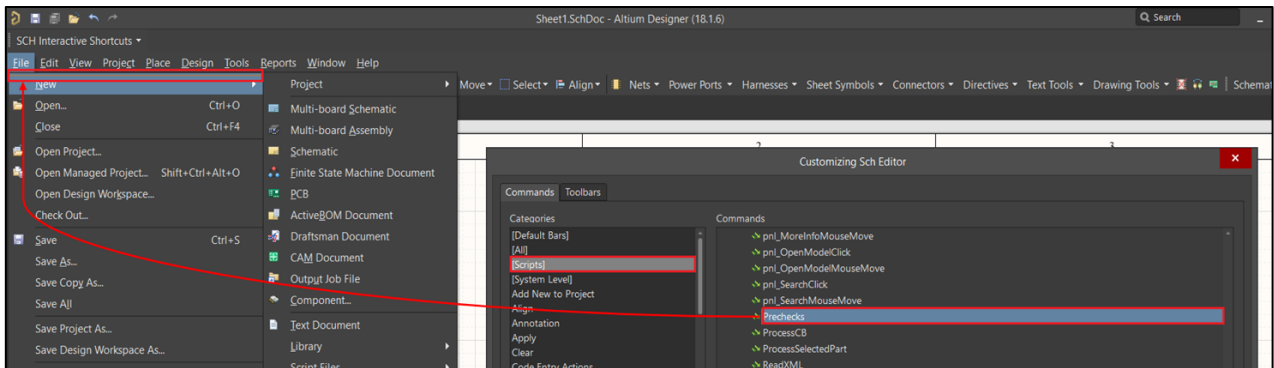
- b. Open the **AltiumLL.PrjScr** Script Project file found in the AltiumLL folder where you extracted the zip file in your Documents directory.



- c. Making sure that you have a SchDoc open and active, click your Right Mouse Button on the menu bar as indicated by the red circle and then select Customize...

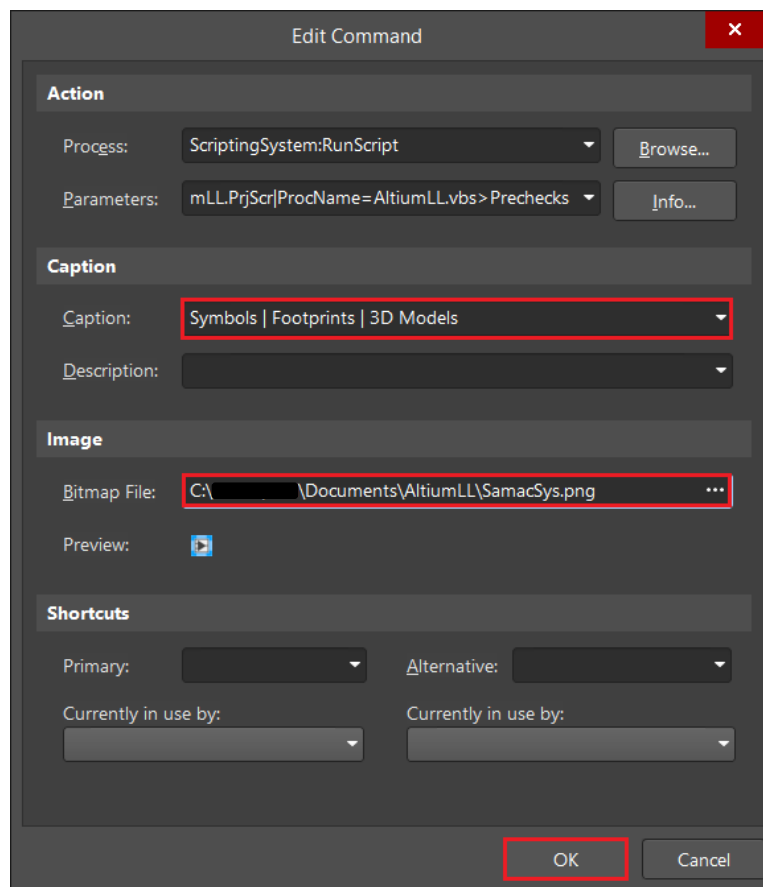


- d. Click on Scripts under the Categories and then **click and drag the Prechecks Command to the File menu** as indicated by the red arrow:

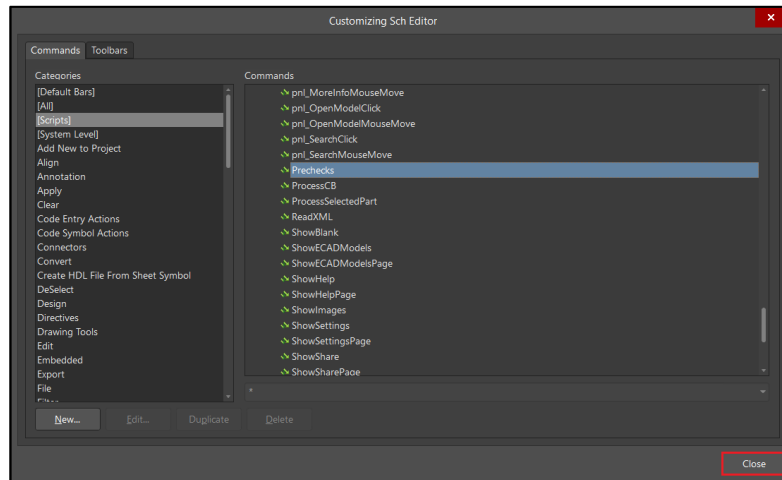


NOTE: Be sure to drag and drop the Prechecks script command to the File menu (simply clicking on Prechecks in the list will give undesirable results).

- e. Type “Symbols | Footprints | 3D Models” as the Caption and then browse to the **SamacSys.png** in the AltiumLL folder of your Documents directory for the Bitmap File. Then click OK



- f. Close the Customizing Sch Editor dialog.



- g. You will now have the menu option “Symbols | Footprints | 3D Models” under the File menu when you have a SchDoc file open and active.

